







BM26A-1000 / -3000 / -6000 / -7000

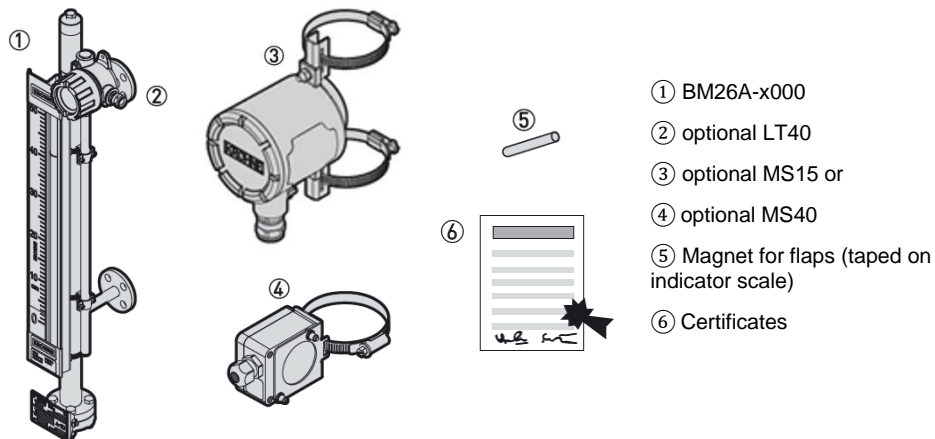
Magnetic Level Indicators (MLI)

-  Installation, assembly, start-up and maintenance may only be performed by appropriately trained personnel. Check the nameplate for correct operating conditions.
-  For use in hazardous areas, special codes and regulations are applicable. Instruments must not be connected to power supply before reading instructions described in the supplementary manual.
-  This instrument complies with requirements of Low Voltage Directive. Instruments must not be connected to power supply before reading instructions described in the manual.
-  The responsibility as to the suitability, intended use and corrosion resistance of the used materials against the measured fluid of this device rests solely with the operator.
-  For complete documentation (manuals, supplementary manuals, data sheets and certificates) please refer to www.krohne.com/Downloads.

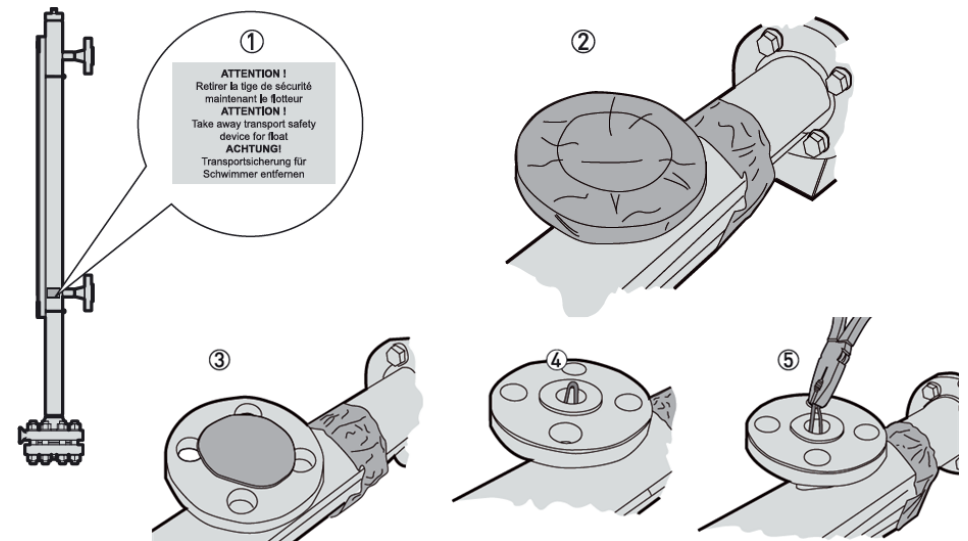
1 Installation

-  **Specific conditions of use to be observed:**
- For thermal data refer to the temperature tables given in the supplementary instructions.
 - Build-up of electrostatic charge on the insulated parts shall be avoided by suitable measures.

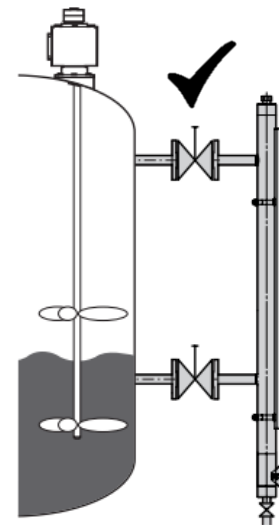
Make sure your order is complete and check the BM26A-nameplate data correspond to your application.



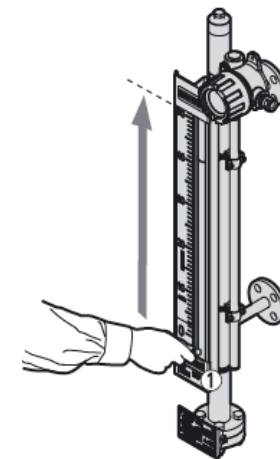
Remove float lock pin prior to installation and check that the inside of the chamber is clean.



Install the device vertically on the tank.

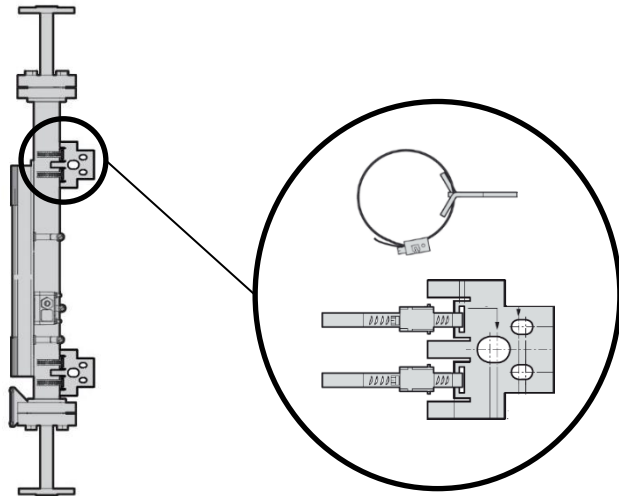


Set flaps to zero position (black) by pointing red end of magnet towards glass tube

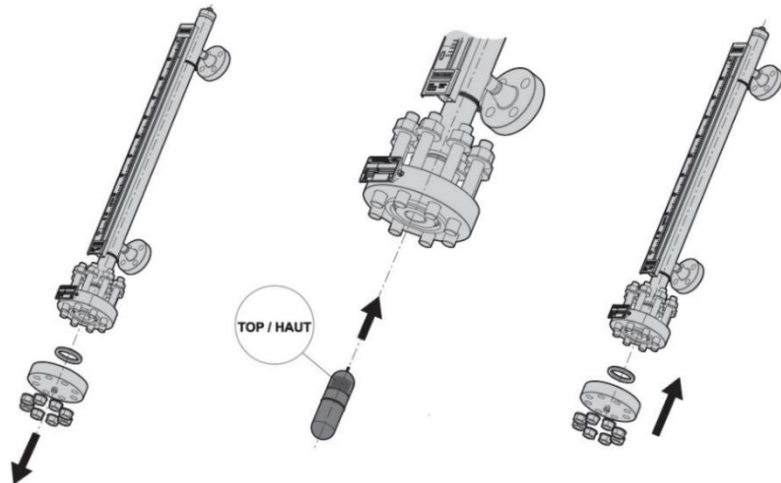


2 Specific case

If BM26A-x000 is delivered with support brackets make sure they are fixed on the tank.
If necessary, add support brackets to the device to avoid damaging the process connections and tank.



In case the float is delivered separately, make sure the ring joints are changed after float installation.



Contact

To view all KROHNE locations and contact details visit:

www.krohne.com

Then "Select your country" from the drop down list at the top left of the page