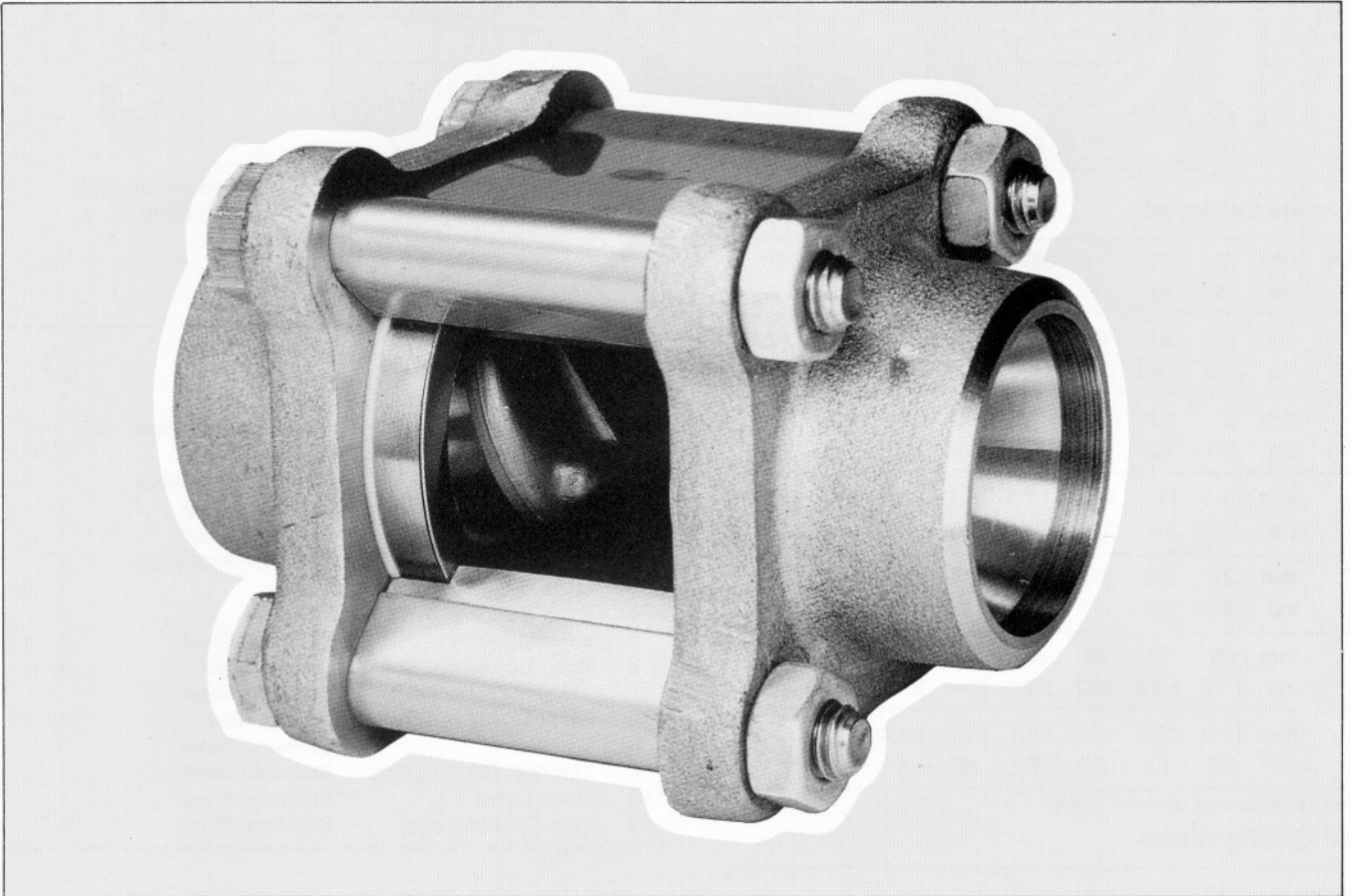


# K44 'Checktite' Swing Check Valves



'Checktite' is a Swing-Check valve employing three-piece construction similar to that used in ball valve design. The valve is available in Carbon and Stainless steel with PTFE or VITON seats for positive shut-off.

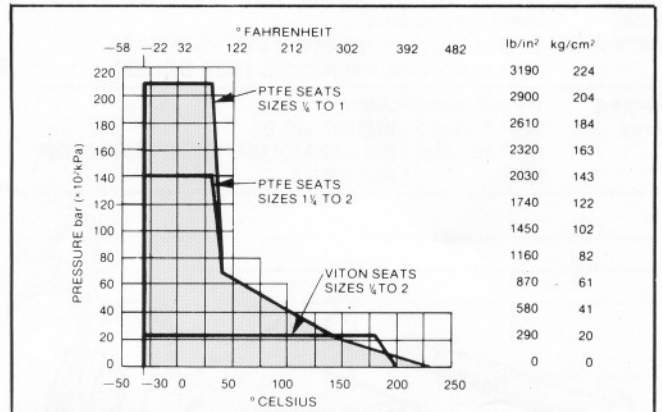
The straight-through flow, compact design and ease of servicing makes 'Checktite' the natural choice for many applications. It is particularly suitable for use on hydrocarbon and chemical process lines.

- Three piece construction makes installations quick and simple.
- Valve body swings away for easy maintenance.
- Available with a variety of end connections.
- Clack rides in reduced port flow-stream to prevent hunting and corresponding high pressure drop.
- Available with PTFE or VITON seats.
- Optional clack spring available for vertical installations and critical water hammer conditions.

### Sizes

1/4" (8mm) — 2" (50mm)

### Pressure Temperature Rating



**Note** – for low pressure applications requiring bubble tight shut-off Viton seats are recommended.  
– 30°C is determined by body material and body connector seal design.

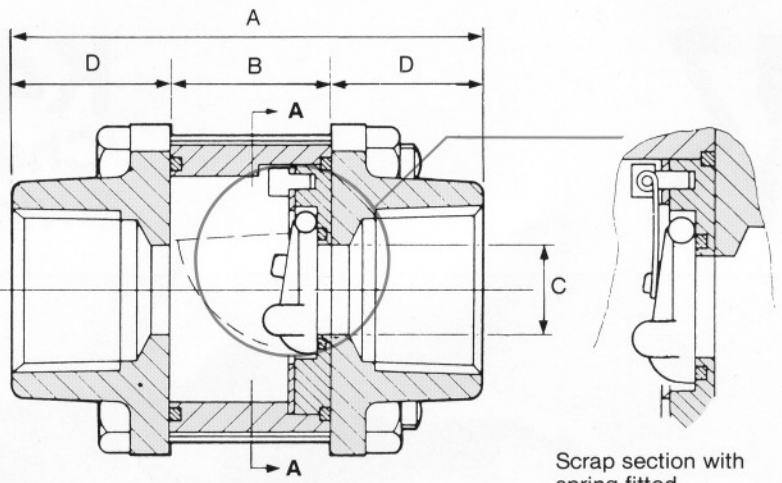
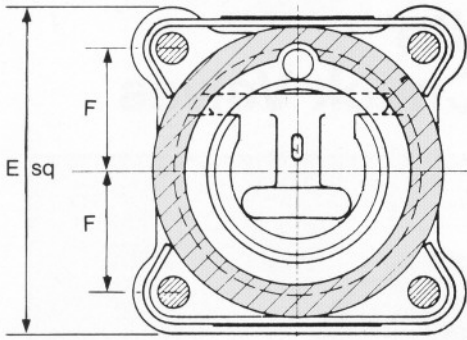
### Pressure Drop

Valve Size	Flow Coef.		Eq. Ig. of Pipe			
	mm	in	kv	cv	metres	ft
8-15	1/4-1/2		8.7	10	.46	1.5
20	3/4		12.1	14	1.44	4.7
25	1		32.8	38	.76	2.5
32	1 1/4		43.2	50	1.47	4.8
40	1 1/2		69.1	80	1.19	3.9
50	2		90.0	104	2.28	7.5

cv – Flow US GPM pressure, PSI

kv – Flow m<sup>3</sup>/hr pressure, BAR

# Basic Dimensions



Scrap section with spring fitted.

## Complete Section AA

Size	mm	8	10	15	20	25	32	40	50
	ins	1/4	3/8	1/2	3/4	1	1 1/4	1 1/2	2
<b>A*</b>	mm	67	67	67	72	95	108	116	128
	ins	2.63	2.63	2.63	2.86	3.75	4.25	4.56	5.06
<b>B</b>	mm	21	21	21	24	32	41	48	57
	ins	.83	.83	.83	.95	1.25	1.63	1.88	2.25
<b>C</b>	mm	11.1	11.1	11.1	14.3	20.6	25.4	31.8	38.1
	ins	7/16	7/16	7/16	9/16	13/16	1	1 1/4	1 1/2
<b>D*</b>	mm	23	23	23	24	32	33	34	36
	ins	.91	.91	.91	.95	1.25	1.31	1.33	1.41
<b>E</b>	mm	45	45	45	52	62	68	80	90
	ins	1.77	1.77	1.77	2.05	2.44	2.68	3.15	3.54
<b>F</b>	mm	15.9	15.9	15.9	19.1	22.2	25.4	28.6	33.3
	ins	.63	.63	.63	.75	.88	1	1.13	1.31

\* Nominal dimensions (screwed valves).

## End Connections

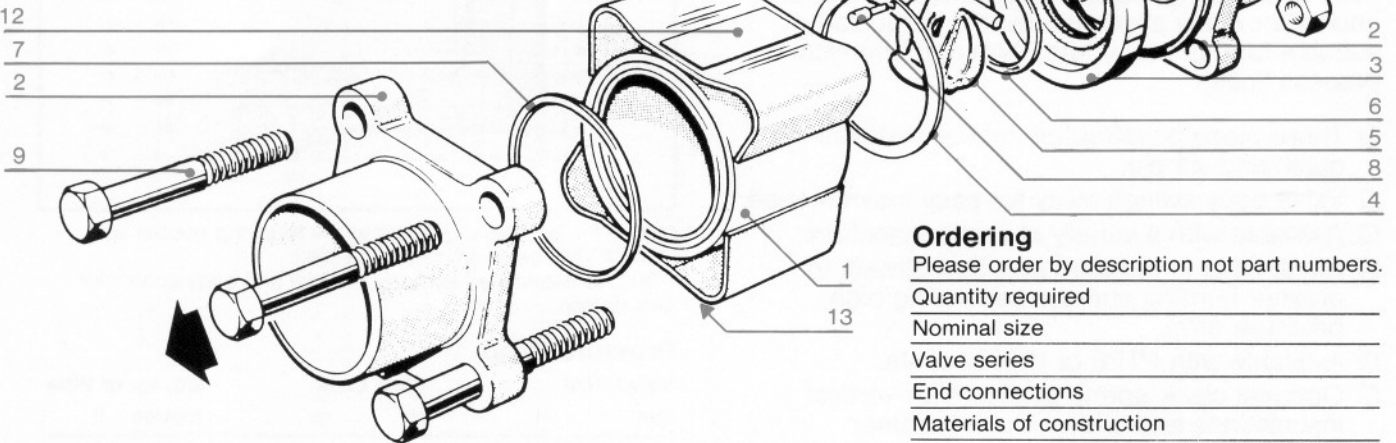
**Butt Weld Valves** Weld preparation  
SCH.40 & 10: BS.2633 Suitable for  
Schedule Pipe to BS.1600

**Socket Weld Valves** Weld preparation  
Socket Weld for assembly with Plain End  
Pipe in accordance with BS.1600 SCH.80

**Screwed Valves** Thread specification  
BSP Taper: ISO/R7 BS.21  
BSP Parallel: BS.2799.ISO/R7 (BS.21.DIN.2999)  
NPT: ANSI B2.1

## Valve Specification

Item No.	Description	Material	No. Off
1	Body	Carbon Steel 316 Stainless Steel	1
2	Body Connector	Carbon Steel 316 Stainless Steel	2
3	Seat Housing	Stainless Steel	1
4	Retaining Plate	Stainless Steel	1
5	Clack	316 Stainless Steel	1
6	Seat	PTFE	1
7	Body Seal	PTFE	2
8	Orientation Pin	Stainless Steel	1
9	Body Connector Bolt	Carbon Steel Stainless Steel	4
10	Body Connector Nut	Carbon Steel Stainless Steel	4
11	Optional Clack Spring	Stainless Steel	1
12	Body Label	Stainless Steel	1
13	Identification Label	Stainless Steel	1



## Ordering

Please order by description not part numbers.

Quantity required \_\_\_\_\_

Nominal size \_\_\_\_\_

Valve series \_\_\_\_\_

End connections \_\_\_\_\_

Materials of construction \_\_\_\_\_



## K Controls Limited

Process House, Stone Close, Horton Road,  
West Drayton, Middlesex UB7 8JU, UK  
Tel (Int+44) (0) 1895 449601  
Fax (Int+44) (0) 1895 448586  
Email: sales@k-controls.co.uk  
http://www.k-controls.co.uk

SLE-2-1-DD. Printed in England

Distributed by: