

# NON RETURN VALVES

Series RG | short length

**GEFA**  
PROCESSTECHNIK GMBH  
[www.gefa.com](http://www.gefa.com)

## Advantages

Sandwich construction for installation  
between flanges PN 6 – PN 40

Backflow is reliably prevented due  
to the spring

Low weight

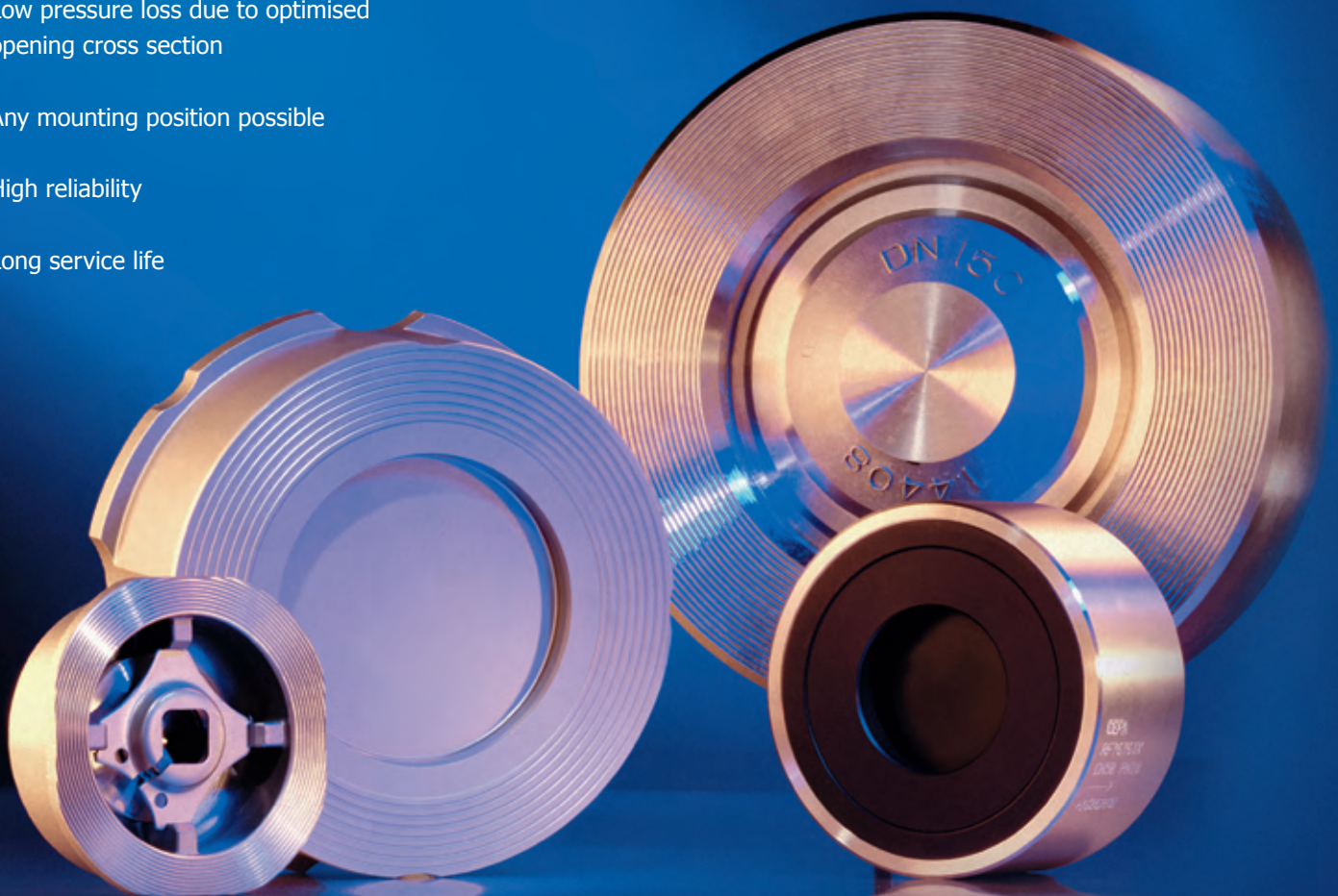
Low noise

Low pressure loss due to optimised  
opening cross section

Any mounting position possible

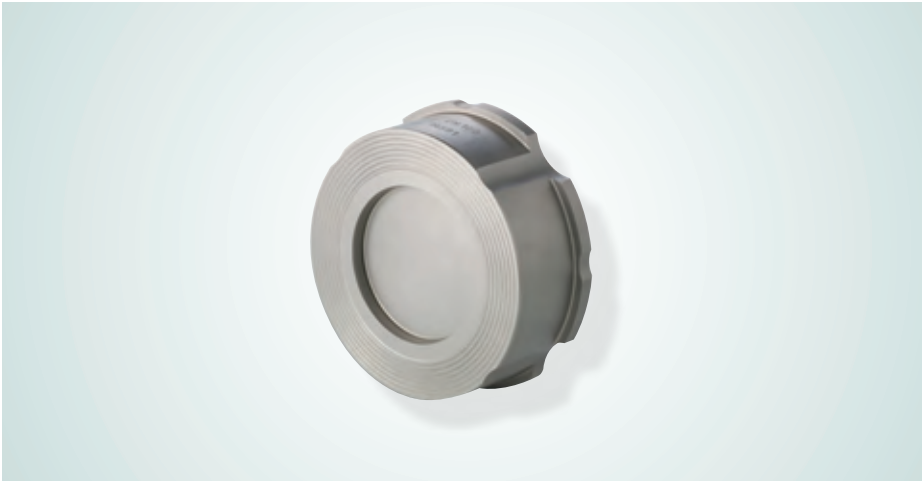
High reliability

Long service life



# THE TYPES

Non return valve | series RF | short length



## RF6666

Soft seated

DN 15 – DN 100 PN 6 – PN 40

DN 125 – DN 150 PN 10/16

### Technical data

#### Materials

Body	1.4408
Valve plate	1.4571
Spring holder	1.4571
Spring	1.4571
Special materials upon request	

#### Sealing

EPDM, NBR, FPM, FEP/FPM

#### Working temperature

-20 °C to +250 °C

#### Face-to-face dimension

DIN EN 558-1 line 49 (DIN 3202/K4)

#### Test

DIN EN 12266-1 leakage rate A

## RF6666M

Metal seated

DN 15 – DN 100 PN 6 – PN 40

DN 125 – DN 150 PN 10/16

### Technical data

#### Materials

Body	1.4408
Valve plate	1.4571
Spring holder	1.4571
Spring	1.4571
Special materials upon request	

#### Working temperature

-50 °C to +400 °C

#### Face-to-face dimension

DIN EN 558-1 line 49 (DIN 3202/K4)

#### Test

DIN EN 12266-1

## RF8686TK

PTFE execution

DN 15 – DN 50 PN 10/PS 10

DN 65 – DN 80 PN 10/PS 6

DN 100 – DN 125 PN 10/PS4

### Technical data

#### Materials

Body	PTFE carbon
Back-up ring	1.4301
Valve plate	PTFE carbon
Spring holder	PTFE carbon
Spring	1.4571 FEP-coated
Valve seat	PTFE carbon
Special materials upon request	

#### Working temperature

-30 °C to +180 °C

#### Face-to-face dimension

DIN EN 558-1 line 52 (DIN 3202/K5)